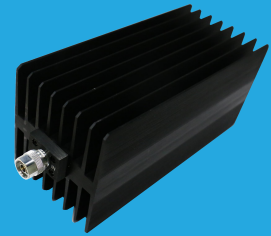


## QCT18K2

### DC~18GHz, 200W

Features:  
 \* Low VSWR  
 \* Broadband

Applications:  
 \* Transmitters  
 \* Antennas  
 \* Laboratory Test  
 \* Impedance Matching



### Electrical

Frequency Range: DC~18GHz  
 Average Power<sup>\*1</sup>: 200W@25°C  
 Impedance: 50Ω  
 Peak Power: 5KW (5μS pulse width, 2% duty cycle) @DC~12.4GHz  
 1KW (5μS pulse width, 10% duty cycle) @18GHz

[1] Derated linearly to 10W@120°C.

### VSWR

Frequency (GHz)	VSWR (max.)
DC~4	1.2
DC~8	1.25
DC~12.4	1.35
DC~18	1.4

### Mechanical

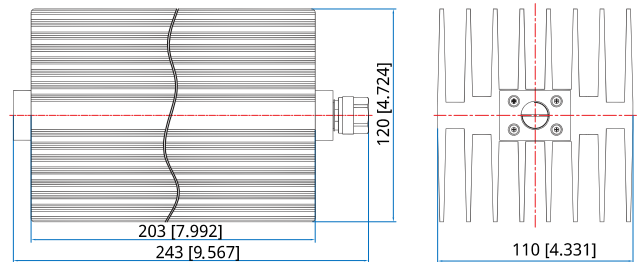
Size<sup>\*2</sup>: 203\*110\*120mm  
 7.992\*4.331\*4.724in  
 Connector: N Male

[2] Exclude connectors.

### Environmental

Temperature: -55~+125°C

### Outline Drawings



Unit: mm [in]  
 Tolerance: ±1mm [±0.04in]

### How To Order

**QCT18K2-X-Y**

X: Frequency in GHz  
 Y: Connector type

Connector naming rules:  
 N - N

Examples:

To order a termination, DC-18GHz, N male, specify QCT18K2-18-N

Customization is available upon request.